



## Pin Descriptions

| Pin Names  | Description          |
|--|----------------------|
| $\overline{\text{OEAB}}$ , $\overline{\text{OEBA}}$<br>LEAB , LEBA | Output Enable Inputs |

## **Absolute Maximum Ratings** (Note 1)

If Military/Aerospace specified devices are required, please contact the National Semiconductor Sales Office/Distributors for availability and specifications.

## DC Electrical Characteristics (Continued)

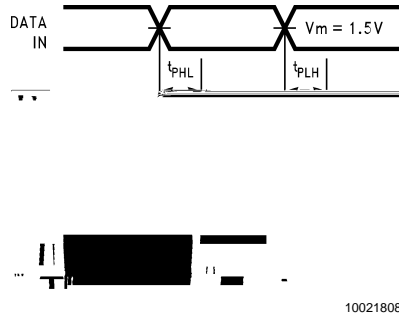
| Symbol | Parameter | ABT543 | Units | V <sub>CC</sub> |  |
|--------|-----------|--------|-------|-----------------|--|
|        |           |        |       |                 |  |
|        |           |        |       |                 |  |
|        |           |        |       |                 |  |

## AC Operating Requirements

|  |  |
|--|--|
|  |  |
|  |  |

---

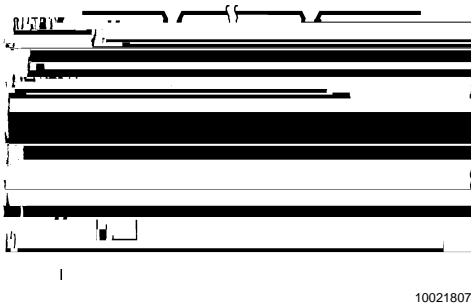
## AC Loading (Continued)



**FIGURE 4. Propagation Delay Waveforms for Inverting and Non-Inverting Functions**



**FIGURE 5. Propagation Delay, Pulse Width Waveforms**



**FIGURE 6. TRI-STATE Output HIGH and LOW Enable and Disable Times (54ABT69.d)**

## Physical Dimensions inches (millimeters)

