



## Pin Assignments

Operating Conditions

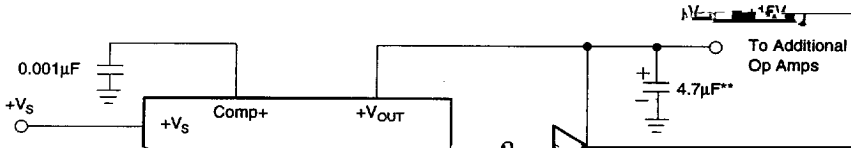
## Typical Performance Characteristics

150

0.00

## Typical Applications

### Typical Applications (continued)





All compensation and bypass caps should have short leads.



If a small signal silicon diode is used, it will clamp the negative voltage. Let's look at an application where a user is trying to detect

In the above example, let's say that the user's load current is  $I_{load} = 1.5A$ . Given  $P_{load} = 7.159W$  for the 4104 in the K package,



## Ordering Information

RG1191N

0° to +70°C

Commercial

14-pin Plastic DIP